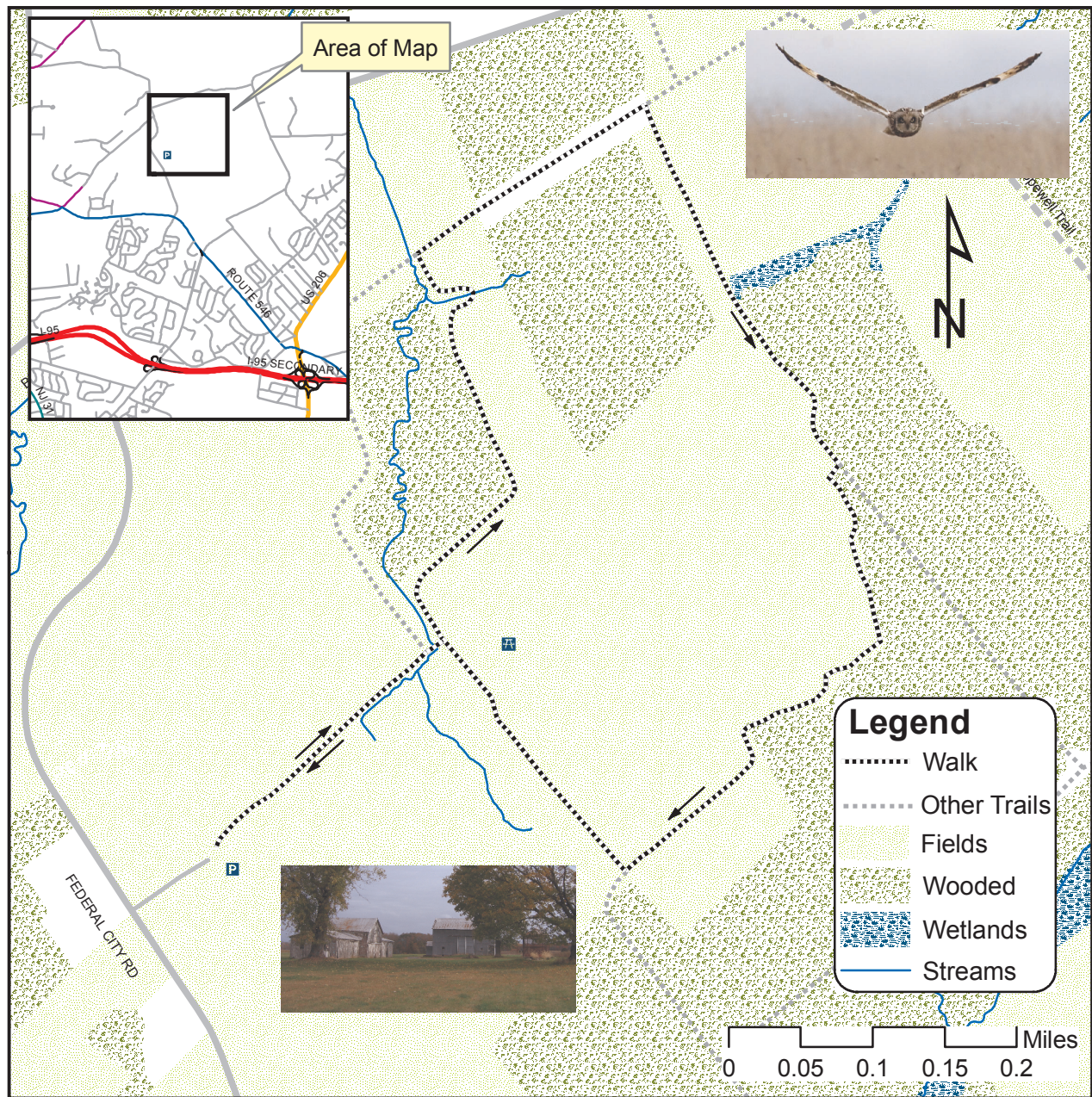


Lawrence Township Greenway Committee 18th Annual Walk

The Pole Farm at Mercer County Park Northwest

December 28, 2008 at 3:00 PM



Join us as we walk through the Pole Farm and look for short-eared owls and harriers hunting meadow voles. The walk follows a mowed path skirting the woods around the fields, and is 2.0 miles in length including a 1.3 mile loop. Enter the park from Federal City Road and park by the farm buildings (shown in the photo). The walk will be cancelled if the weather is especially severe. Please check lawrencegreenway.org for updates.